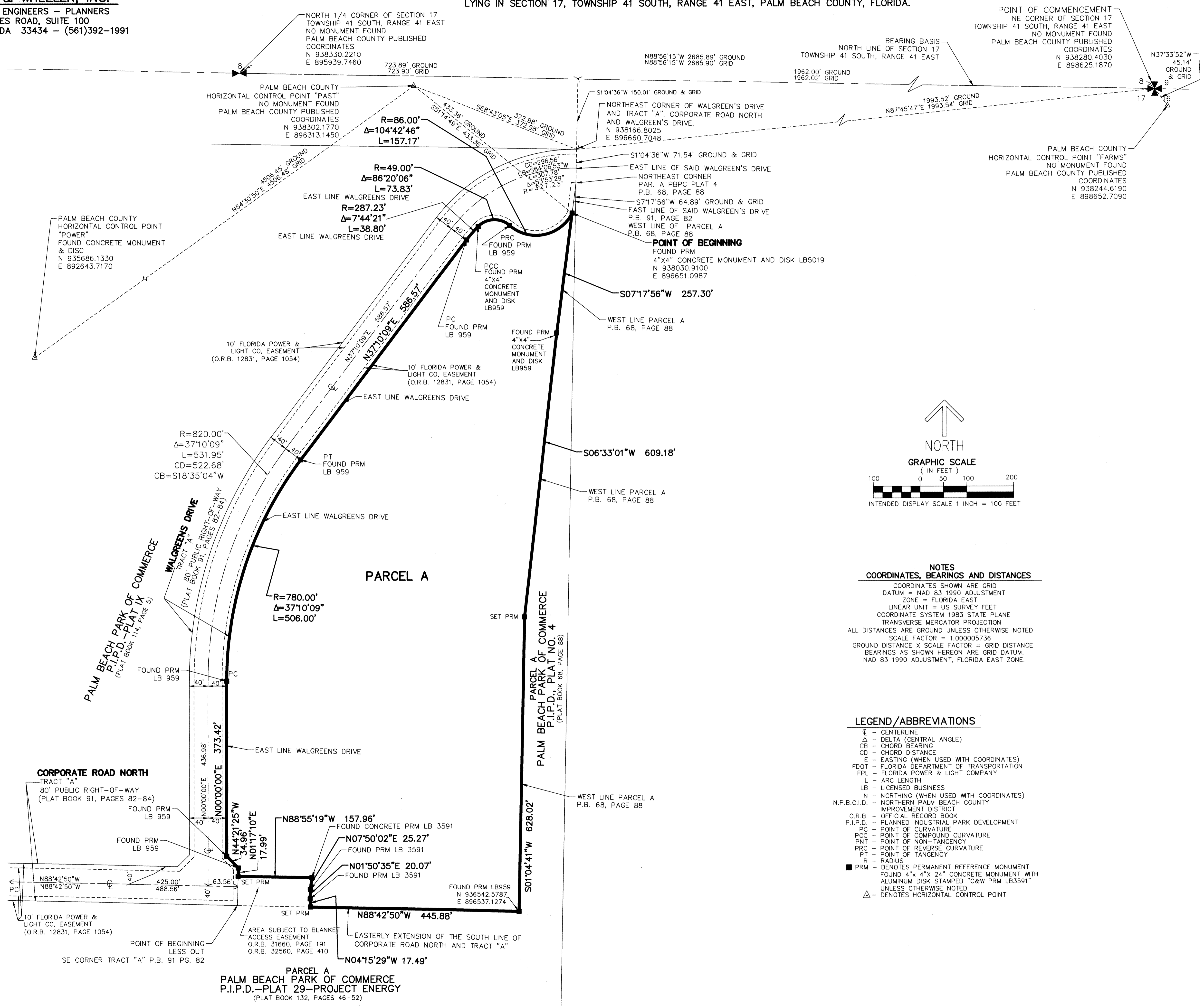


THIS INSTRUMENT PREPARED BY
DAVID P. LINDLEY
OF
CAULFIELD & WHEELER, INC.
SURVEYORS - ENGINEERS - PLANNERS
7900 GLADES ROAD, SUITE 100
BOCA RATON, FLORIDA 33434 - (561)392-1991

PALM BEACH PARK OF COMMERCE, P.I.P.D. - PLAT 31

A PORTION OF SECTION 17, TOWNSHIP 41 SOUTH, RANGE 41 EAST, PALM BEACH COUNTY, FLORIDA,
LYING IN SECTION 17, TOWNSHIP 41 SOUTH, RANGE 41 EAST, PALM BEACH COUNTY, FLORIDA.

197
SHEET 2 OF 2



NOTES
COORDINATES, BEARINGS AND DISTANCES
COORDINATES SHOWN ARE GRID
DATUM = NAD 83 1990 ADJUSTMENT
ZONE = FLORIDA EAST
LINEAR UNIT = US SURVEY FEET
COORDINATE SYSTEM 1983 STATE PLANE
TRANSVERSE MERCATOR PROJECTION
ALL DISTANCES ARE GROUND UNLESS OTHERWISE NOTED
SCALE FACTOR = 1.000005736
GROUND DISTANCE X SCALE FACTOR = GRID DISTANCE
BEARINGS AS SHOWN HEREON ARE GRID DATUM,
NAD 83 1990 ADJUSTMENT, FLORIDA EAST ZONE.

LEGEND/ABBREVIATIONS
C - CENTERLINE
Δ - DELTA (CENTRAL ANGLE)
CB - CHORD BEARING
CD - CHORD DISTANCE
E - EASTING (WHEN USED WITH COORDINATES)
FDOT - FLORIDA DEPARTMENT OF TRANSPORTATION
FPL - FLORIDA POWER & LIGHT COMPANY
L - ARC LENGTH
LB - LICENSED BUSINESS
N - NORTHING (WHEN USED WITH COORDINATES)
N.P.B.C.I.D. - NORTHERN PALM BEACH COUNTY
IMPROVEMENT DISTRICT
O.R.B. - OFFICIAL RECORD BOOK
P.I.P.D. - PLANNED INDUSTRIAL PARK DEVELOPMENT
PC - POINT OF CURVATURE
PCC - POINT OF COMPOUND CURVATURE
PNT - POINT OF NON-TANGENCY
PRC - POINT OF REVERSE CURVATURE
PT - POINT OF TANGENCY
R - RADIUS
PRM - DENOTES PERMANENT REFERENCE MONUMENT
FOUND 4" x 4" x 24" CONCRETE MONUMENT WITH
ALUMINUM DISK STAMPED "C&W PRM LB3591"
UNLESS OTHERWISE NOTED
Δ - DENOTES HORIZONTAL CONTROL POINT

PARCEL A
PALM BEACH PARK OF COMMERCE
P.I.P.D. - PLAT 29 - PROJECT ENERGY
(PLAT BOOK 132, PAGES 46-52)